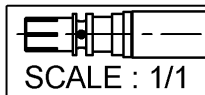
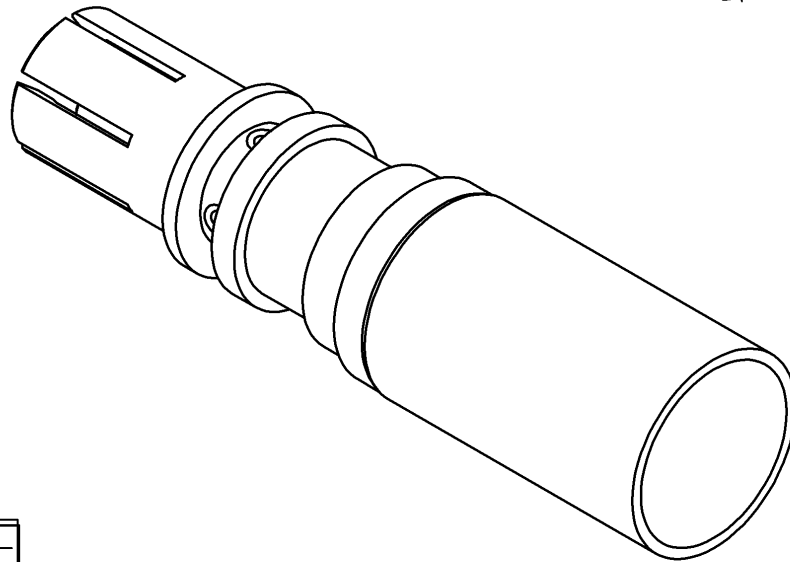
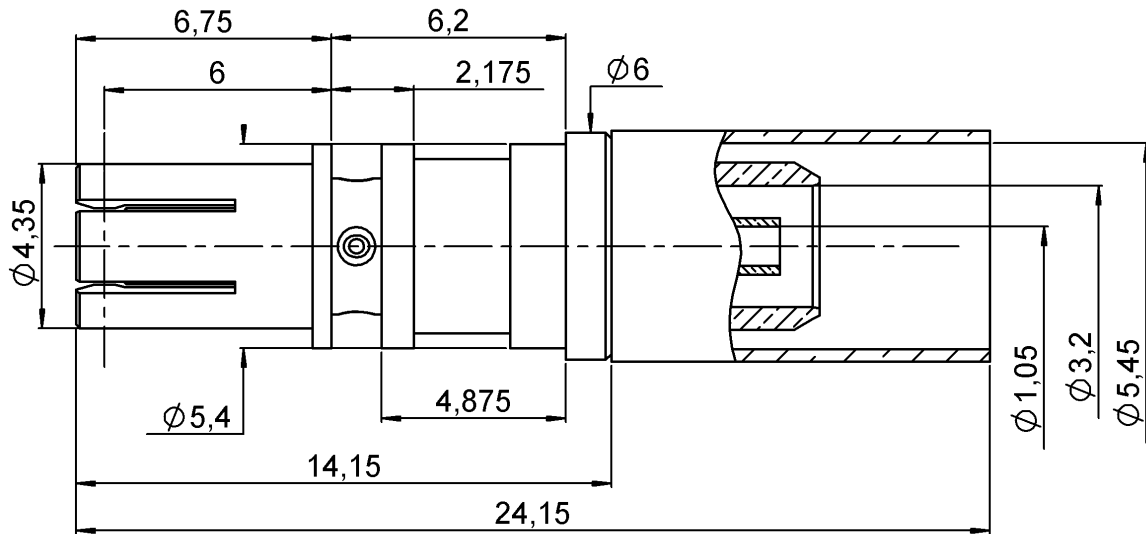


STRAIGHT FEMALE PLUG CRIMP TYPE

R114.089.325

CABLE 5/50S

Series : SMB



All dimensions are in mm.



| COMPONENTS | MATERIALS | PLATINGS (µm) |
|----------------|-----------|------------------------|
| BODY | BRONZE | NICKEL 2 |
| CENTER CONTACT | BRONZE | GOLD 0.8 OVER NICKEL 2 |
| OUTER CONTACT | - | - |
| INSULATOR | PTFE | - |
| GASKET | - | - |
| OTHERS PARTS | BRASS | NICKEL 2 |
| . | - | - |
| . | - | - |

Issue : 0319 A

In the effort to improve our products, we reserve the right to make changes judged to be necessary.



STRAIGHT FEMALE PLUG CRIMP TYPE

R114.089.325

CABLE 5/50S

Series : SMB

PACKAGING

| Standard | Unit | Other |
|------------|-------------------|-------------------|
| 100 | 'W' option | Contact us |

SPECIFICATION

-

ELECTRICAL CHARACTERISTICS

| | | | |
|---------------------------------|---------------|--------------|--------------------------|
| Impedance | | 50 | Ω |
| Frequency | | 0-4 | GHz |
| VSWR | 1.06 + | 0.040 | x F(GHz) Maxi |
| Insertion loss | | 0.25 | \sqrt{F} (GHz) dB Maxi |
| RF leakage | - (| NA | - F(GHz)) dB Maxi |
| Voltage rating | | 335 | Veff Maxi |
| Dielectric withstanding voltage | | 1000 | Veff mini |
| Insulation resistance | | 1000 | M Ω mini |

CABLE ASSEMBLY

| Stripping | a | b | c | d | e | f |
|-----------|------|------|------|------|------|------|
| mm | 2.30 | 5.50 | 9.30 | 0.00 | 7.00 | 0.00 |

Assembly instruction : **page3**

Recommended cable(s)
RG 58

Cable retention
- pull off **180** N mini
- torque **NA** N.cm

MECHANICAL CHARACTERISTICS

| | | |
|----------------------------|-----------|-----------|
| Center contact retention | | |
| Axial force – Mating end | 10 | N mini |
| Axial force – Opposite end | 10 | N mini |
| Torque | NA | N.cm mini |

TOOLING

| Part Number | Description | Hexagon |
|--------------|---------------|------------------------|
| . | . | . |
| R282.293.000 | CRIMPING TOOL | |
| R282.235.910 | CRIMPING DIES | square 1.1 Hex:5.35 |

| | | |
|--------------------|--------------|------|
| Recommended torque | | |
| Mating | NA | N.cm |
| Panel nut | NA | N.cm |
| Clamp nut | NA | N.cm |
| A/F clamp nut | 0.000 | mm |

| | | |
|-------------|--------------|-------------|
| Mating life | 100 | Cycles mini |
| Weight | 2.050 | g |

OTHERS CHARACTERISTICS

**THIS COAX CAN BE USED WITH
FAKRA2 PLUG HOUSING R197.112._90
(replaced the _ by the coding letter)**

ENVIRONMENTAL

| | | |
|-----------------------|-----------------|--------------|
| Operating temperature | -40/+110 | $^{\circ}$ C |
| Hermetic seal | NA | Atm.cm3/s |
| Panel leakage | NA | |

Issue : 0319 A

In the effort to improve our products, we reserve the right to make changes judged to be necessary.



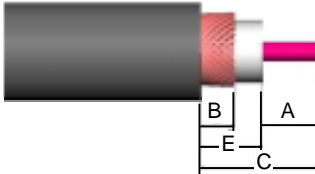
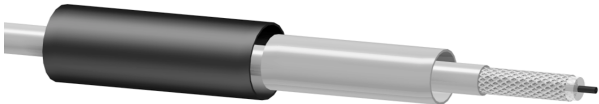
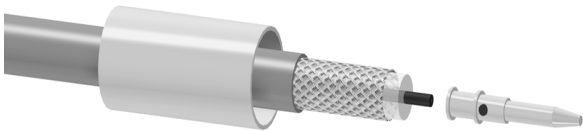
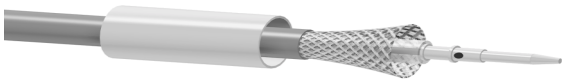
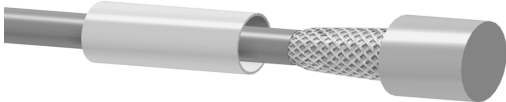

STRAIGHT FEMALE PLUG CRIMP TYPE

R114.089.325

CABLE 5/50S

Series : SMB

RECOMMENDED MOUNTING PROCEDURE

| | |
|--|--|
| |  |
| <p>1</p> <ul style="list-style-type: none"> • Slide the ferrule onto the cable • Strip the cable |  |
| <p>2</p> <ul style="list-style-type: none"> • Slide the centre contact on until it bottoms against the cable dielectric • Crimp the centre contact With crimping tool R282.293.000+diesR282.235.910 (square1.1) |  |
| <p>3</p> <ul style="list-style-type: none"> • Fan the braid |  |
| <p>4</p> <ul style="list-style-type: none"> • Slide the cable into the body until it bottoms against insulator |  |
| <p>5</p> <ul style="list-style-type: none"> • Slide the ferrule over the braid • Crimp the ferrule with crimping tool R282.293.000 or crimping tool M22520/5-01 +diesR282.235.910(Hex:5.35) |  |

Issue : 0319 A

In the effort to improve our products, we reserve the right to make changes judged to be necessary.

